

EXTERNAL WARNING LIGHT INSTALLATION INSTRUCTIONS

KATO MS7

ESTIMATED TIME OF INSTALLATION: 3 HOURS

Required Parts:

- 4m x 7core cable
- 1 x cable grommet
- 4 x self drilling screws
 - Solder
 - Heatshrink
- 1m x single black wire
- 1 x eye crimp
- 15 x ferrule crimp
 - Cable ties
- External Warning Light
 - Activation Box

KATO MS7 INSTALLATION INSTRUCTIONS

Read all instructions before commencing

PRE-INSTALLATION CHECKS

- 1.** Set up machine on full outriggers and raise the boom so there are no errors or buzzers active. Set-up computer for main hook.
- 2.** Raise any hook to an ATB alarm situation. Check that the crane motions winch up, luff down, and tele out functions are cut off. Check that the “safe” crane motions winch down, tele in and luff up are operable.
- 3.** Whilst still in alarm condition, switch the ATB over-ride and verify that the unsafe functions are now operable. *note: be careful not to overwind hook
- 4.** Repeat steps 2-3 with the other hook.
- 5.** Lift a load and bring it to the 100% limit. Check that all unsafe motions (Luff down, winch up, Tele out) are in-operable and safe functions (luff up, winch down, tele in) are operable.
- 6.** Then turn the STOP switch ‘off’. Test that all unsafe functions are operational. Beware: Autostop functions will not operate during over-ride.
 - Should any of these tests fail call Microtec for service

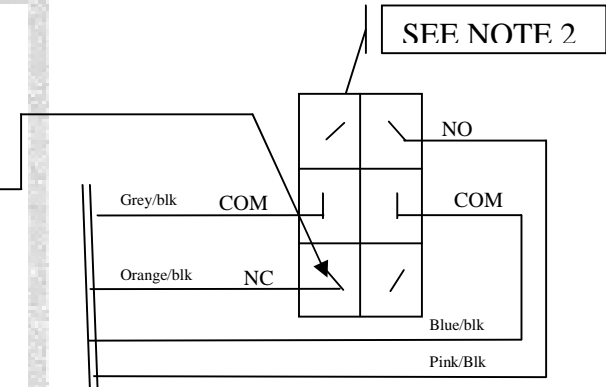
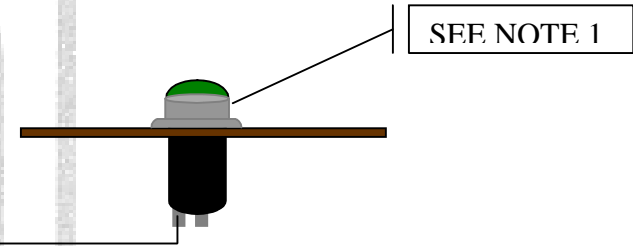
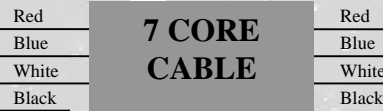
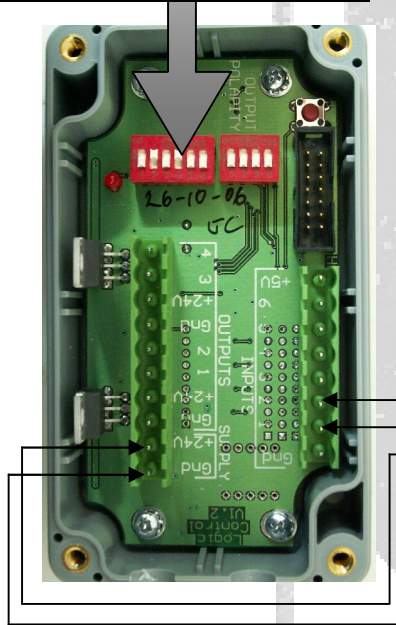
INSTALLATION OF INPUTS

PREINSTALLATION PREPARATION

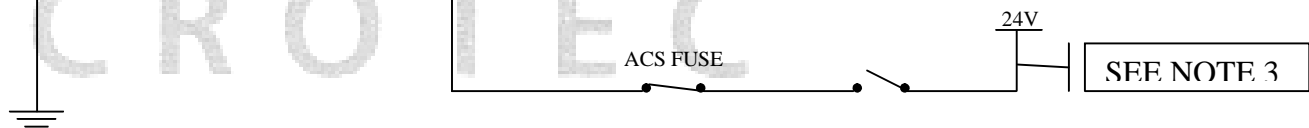
1. Isolate batteries during installation with isolator switch.
2. Remove side panel of the MS7 with a flat head screwdriver to expose the rear of the lamps and switches.
3. Remove the “memory” and “stabilizer and control” boards by holding the sides and gently pulling out.
4. Drill a hole above the other connectors for the 7 core cable.
5. Insert the cable grommet in the hole.
6. Strip approx. 20cm of the insulation to expose the wires
7. Find a suitable position for the activation box near the computer.
8. Run the 7 core cable from the computer to the activation box

CONNECTIONS TO KATO MS7

SWITCH NO.	SWITCH POSITION
1	On
2	Off
3	Off
4	Off
5	Off
6	On

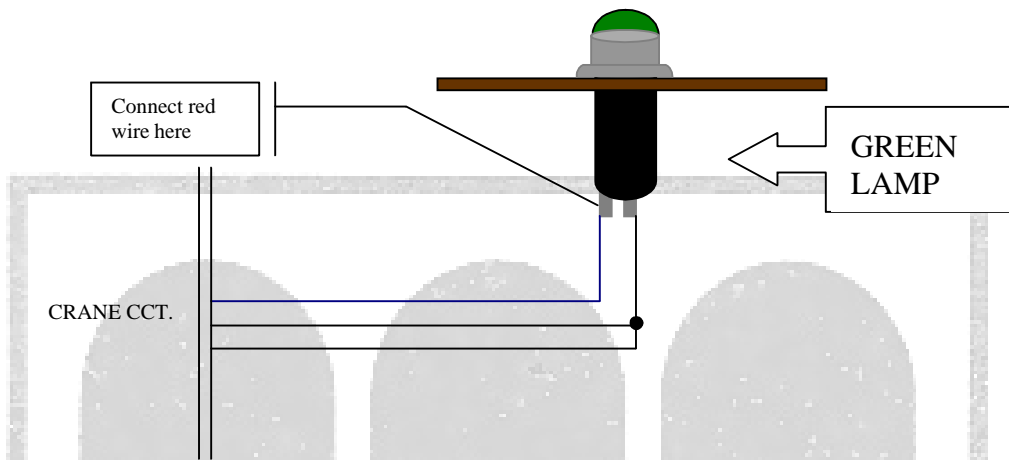


Use ferrule crimps provided to make the connections to the activation box. You may also need to shorten the length of the ferrules so the lid can close easily.

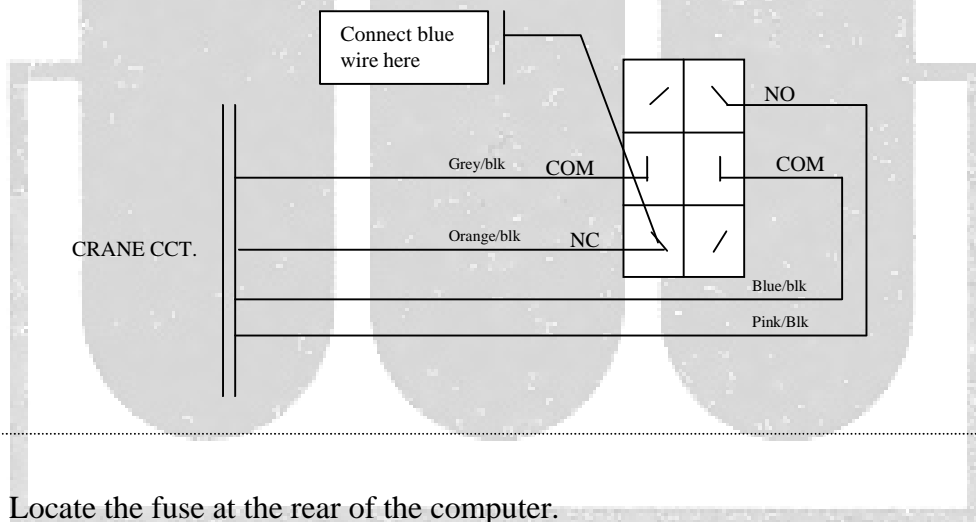


NOTES

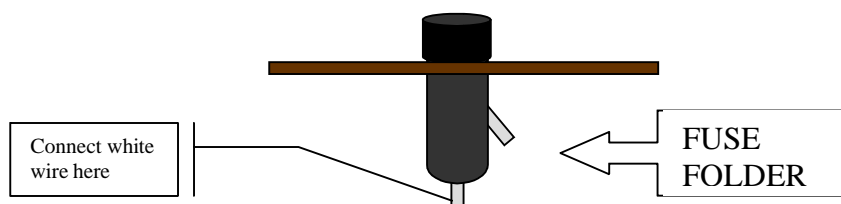
- 1
- Locate the connections to the green lamp. There are 2 connections as shown below.
 - Connect the red wire from the loom to the blue wire connected to the lamp using solder and soldering iron



- 2
- Confirm the connections to the over-ride switch (Stop switch) are the same as per the diagram below.
 - Connect the blue wire from the loom to the orange/blk wire on the switch.



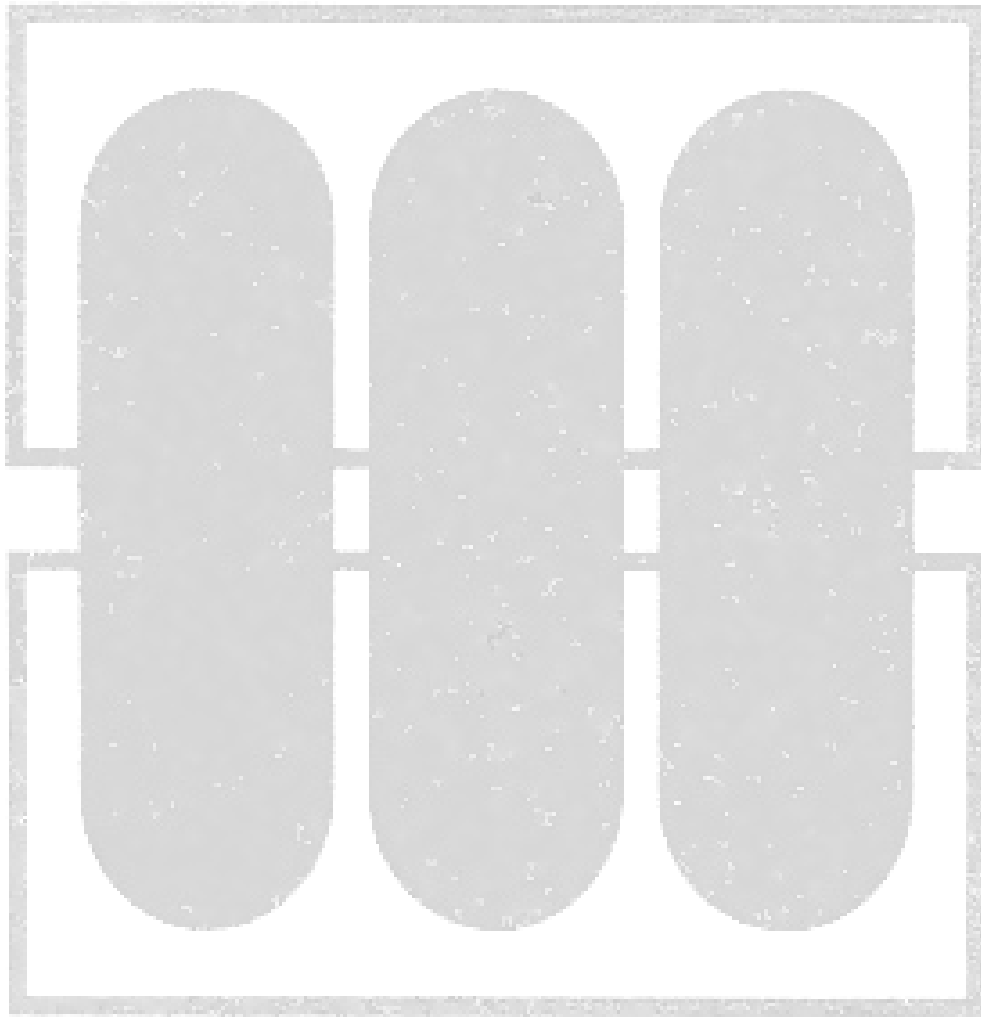
- 3
- Locate the fuse at the rear of the computer.
 - Connect the white wire to the terminal shown in the diagram below.
 - Using a spare black piece of wire, connect one end to a suitable chassis earth point using an eye crimp (near activation unit)
 - Run this cable to the activation box



WIRE COLOUR CODE:

EXAMPLE: Red/Yellow-Blue

- Red = Main wire colour
- Yellow = Vertical line colour
- Blue = Horizontal line colour



M I C R O T E C